

# 334/6 Rack Screwdriver set Kraftform Plus Lasertip and rack, 6 pieces

Kraftform Plus – Series 300



<b>EAN:</b>	4013288003133	<b>Size:</b>	285x210x55 mm
<b>Part number:</b>	05105650001	<b>Weight:</b>	642 g
<b>Article number:</b>	334/6	<b>Country of origin:</b>	CZ
		<b>Customs tariff number:</b>	82054000

- Screwdriver for slotted and cross-recess screws, Phillips
- Multi-component Kraftform handle for fast and ergonomic screwdriving
- Take it easy tool finder: colour coding according to profile and size
- Hexagonal anti-roll feature against rolling away
- Lasertip tips for more secure fit in the screw head

6-piece screwdriver set with Kraftform Plus handle for pleasant, ergonomic working that prevents blisters and calluses. Hard gripping zones for high working speeds whereas soft zones ensure high torque transfer. Partially Lasertip: the tip literally bites into the head of the screw and thereby prevents any slipping out of the screw head. Take it easy Tool Finder: colour coding according to profile and size. The hexagonal anti-roll feature prevents any bothersome rolling away at the workplace. Includes practical rack for tidy storage of the screwdrivers.

## Web link

[https://products.wera.de/en/screwdrivers\\_kraftform\\_plus\\_series\\_300\\_334\\_6.html](https://products.wera.de/en/screwdrivers_kraftform_plus_series_300_334_6.html)

Wera - 334/6  
05105650001 - 4013288003133

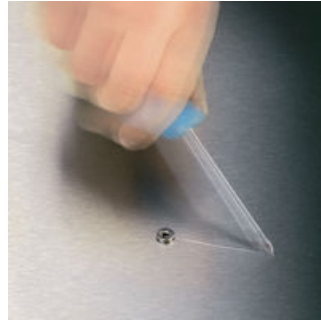
Wera Werkzeuge GmbH  
Korzter Straße 21-25  
D-42349 Wuppertal  
Tel: +49 (0)2 02 / 40 45-0  
E-Mail: [info@wera.de](mailto:info@wera.de)

Kraftform Plus – Series 300

Lasertip prevents slipping out



Kraftform Plus screwdrivers - ergonomics you can grasp. They relieve the entire hand-arm system even when used intensively. Along with other technical and product advantages such as the Lasertip for a secure fit in the screw head, Kraftform screwdrivers are the ideal choice whenever manual screwdriving jobs are concerned.



It happens time and time again that the tip slips out of the screw head when screwdriving, sometimes damaging valuable surfaces or even causing injury. The tips of the Wera Lasertip screwdrivers are microscopically roughened by means of a laser. This rough surface literally "bites" itself firmly into the screw head. Slipping out becomes a thing of the past.

Lasertip



A precisely-focused laser creates a sharp-edged surface structure. Wera Lasertip "bites" itself into the screw head and prevents any slips out of the recess. It is available for screwdrivers for slotted, Phillips and Pozidriv screws.

Reduced contact pressure



Wera Lasertip reduces the contact pressure required and enhances force transfer - meaning less screwdriving effort is required. Screwdriving becomes safer and easier.

Prevents hand injuries



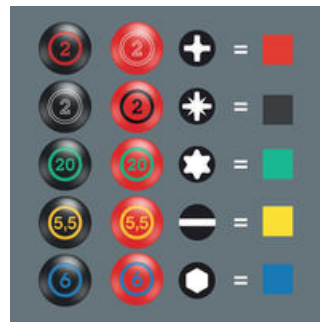
The outstanding design of the Kraftform handle that fits perfectly into the hand prevents hand injuries such as blisters and calluses.

Rapid hand repositioning



The hard materials used for the handle ensure rapid hand repositioning without any danger of the skin "sticking" to the handle. The surrounding hard zones with large diameters glide like wheels through the hand.

"Take it easy" Tool Finder



Screwdrivers with "Take it easy" tool finder: colour coding according to profile and size stamp.

Non-roll feature



The hexagonal non-roll feature prevents any rolling away at the workplace.

Web link

[https://products.wera.de/en/screwdrivers\\_kraftform\\_plus\\_series\\_300\\_334\\_6.html](https://products.wera.de/en/screwdrivers_kraftform_plus_series_300_334_6.html)

Wera - 334/6

05105650001 - 4013288003133

Wera Werkzeuge GmbH

Korzter Straße 21-25

D-42349 Wuppertal

Tel: +49 (0)2 02 / 40 45-0

E-Mail: [info@wera.de](mailto:info@wera.de)

## 334/6 Rack Screwdriver set Kraftform Plus Lasertip and rack, 6 pieces

Kraftform Plus – Series 300



### Set contents:

#### 350 PH Screwdriver for Phillips screws, PH 1 x 80 mm



05008710001	1x	PH 1 x 80 mm
05008720001	1x	PH 2 x 100 mm

#### 334 Screwdriver for slotted screws, 1.2 x 6.5 x 150 mm



05110010001	1x	1.2 x 6.5 x 150 mm
-------------	----	--------------------

#### 335 Screwdriver for slotted screws, 0.5 x 3 x 80 mm



05110001001 <sup>1)</sup>	1x	0.5 x 3 x 80 mm
05110004001	1x	0.8 x 4 x 100 mm
05110007001	1x	1 x 5.5 x 125 mm

1) without Lasertip

### Web link

[https://products.wera.de/en/screwdrivers\\_kraftform\\_plus\\_series\\_300\\_334\\_6.html](https://products.wera.de/en/screwdrivers_kraftform_plus_series_300_334_6.html)

Wera - 334/6

05105650001 - 4013288003133

Wera Werkzeuge GmbH  
Korzter Straße 21-25  
D-42349 Wuppertal  
Tel: +49 (0)2 02 / 40 45-0  
E-Mail: [info@wera.de](mailto:info@wera.de)